



ADTECH
Analog-Digital Technology, Inc.

The Adtech SCX 102 loop isolator provides a solution for ground loops and problems encountered in connecting together recorders, process control systems, and computers. The SCX 102 breaks the galvanic path between the transmitted signal and the output receiving device, insuring reliable and accurate current-to-current signal transfer.

The SCX 102 accepts a 4-20 mA DC signal and provides an isolated 4-20 mA DC output.

Operating power is derived from the input signal, so no external power source is required.

The SCX 102 is easily inserted between the loop(s) requiring input/output isolation providing an exact one-to-one 4-20 mA DC current transfer.

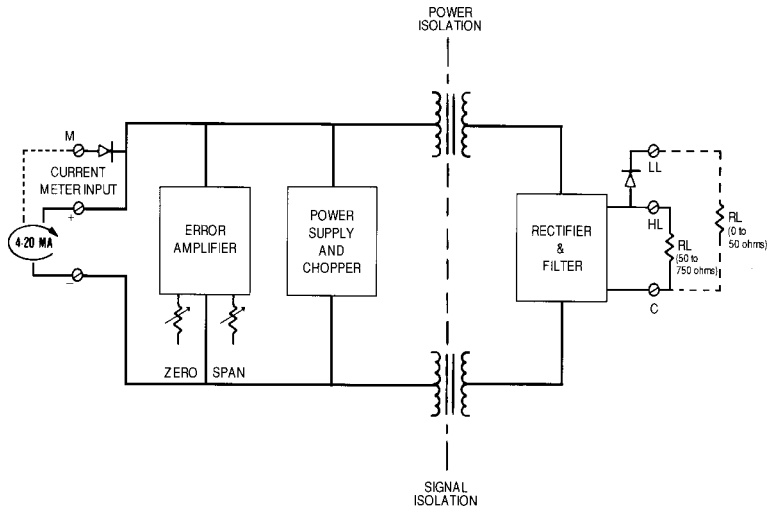
The SCX 102 provides the lowest input burden in its class, making it ideally suited for most signal repeating/isolating applications.

Standard features include a 0 to 750 ohm output load range, and $\pm 0.1\%$ accuracy without the need to recalibrate for load resistance changes.

Additional standard features include reverse polarity protection and convenient current monitoring terminals as shown in the diagrams.

An extremely important standard feature is an output overvoltage clamp that prevents overloading of the input loop under an open output loop condition.

Din mounting is supplied as standard. Surface mount (option H 26) and snap track (option H 25) are available at no extra cost, specify.



Features

- **DC Current Input/Output:** 4-20 mA
- **Repeatability:** $\pm 0.01\%$ of span
- **High Accuracy:** $\pm 0.1\%$ of span
- **Output Ripple:** Less than 0.1% of output span
- **No External Power Source:** Loop powered

Loop Isolator

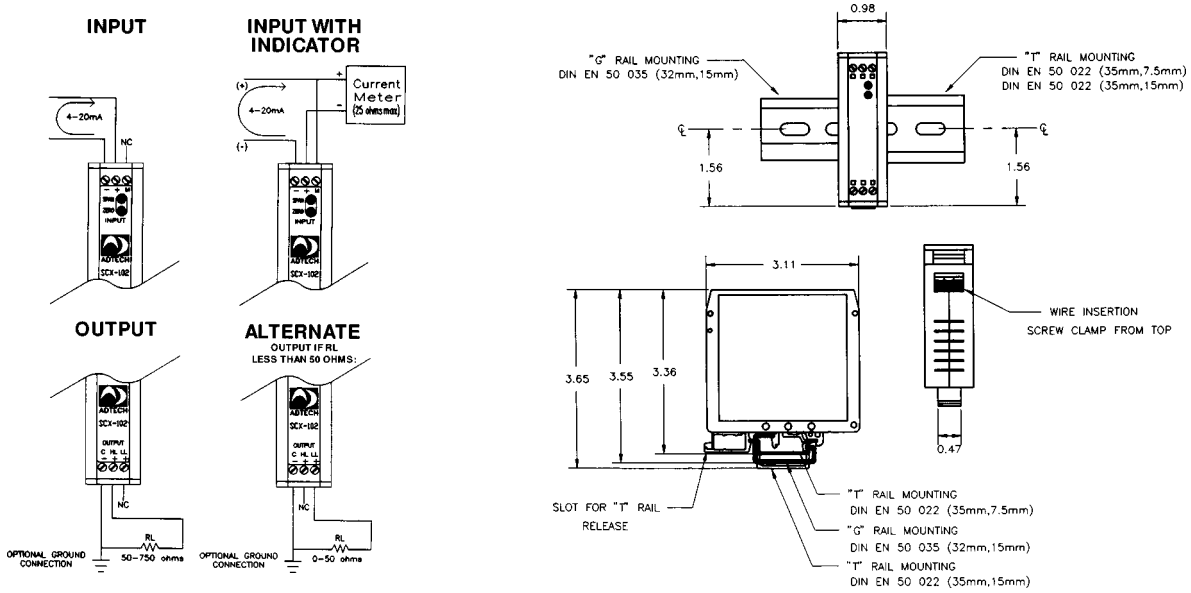
Model No. SCX 102

Typical Applications

- **Interface non-equal plant ground systems**
- **Solves ground loop problems**
- **Meet safety standards for shock hazard**
- **Computer/programmable controller interface**



Connections/Dimensions



Input/Output

Performance

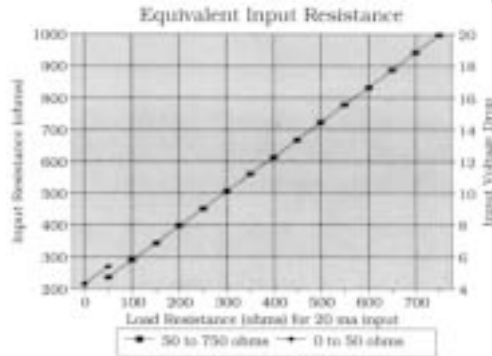
Input Signal
4-20 mA DC

Output Signal
4-20 mA

Calibrated Accuracy: $\pm 0.1\%$ including the combined effects of repeatability, hysteresis, adjustment resolution, and terminal linearity.
Temperature Stability: $\pm 0.01\%/^{\circ}\text{C}$ max., $\pm 0.004\%/^{\circ}\text{C}$ typical
Load Resistance Effect: $\pm 0.1\%$ of output span maximum over the entire load range
Output Ripple: $\pm 0.1\%$ of output span max.

Response Time: 150 milliseconds (10% to 90% step input)
Temperature Range: -18°F to 185°F (-25°C to 85°C) operating; -40°F to 200°F (-40°C to 93°C) storage
Isolation: 250 VAC, 350 VDC common-mode

(It will withstand 1,500 VAC dielectric strength test for 1 minute without breakdown.)
Input Voltage Drop: $2.8 + 1.1 (RL + 40) I$ -Input (where I-Input is in amps)



Power Mechanical

External Power: None

Electrical Classification: General purpose
Connection: Screw compression type, accepts up to 14AWG wire

Controls: Multiturn potentiometers for zero & span
Mounting: DIN – standard (See other options below)
Weight: Net Unit: 4 oz. (115 grams)
 Shipping: 7 oz. (200 grams)

Options

Option No.	Description	H 27	NEMA 4 Enclosure
H 15D	Explosion Proof: Class 1, Group B, C & D	H 29	T 35 DIN "T" rail 2 ft. long
H 25	Snap-Track Mount	H 30	T 32 DIN "G" rail 2 ft. long
H 26	Surface Mounting		

Ordering Information

- Model number
 - Mounting, housing, and miscellaneous options
- Please refer to the Housing and/or Option Section for more specific and detailed information.*

Represented by:



Analog-Digital Technology, Inc.
 830 Canning Parkway
 Victor, New York 14564-8940
 Phone: (585) 869-6330
 Fax: (585) 869-1835
 E Mail: adtech@adtech-inst.com
 Web site: http://www.adtech-inst.com

Information subject to change without notice.